



School:  
Name of Student:  
Sets: triangle, circle, square  
Further tools: paper, coloured pencil  
Date:

**STUDENT**  
PUSE Task Number  
**A**  
**401**

**Description of the task:**

First, choose a base form: triangle, circle or square. (T-triangle; C-circle; S-square)

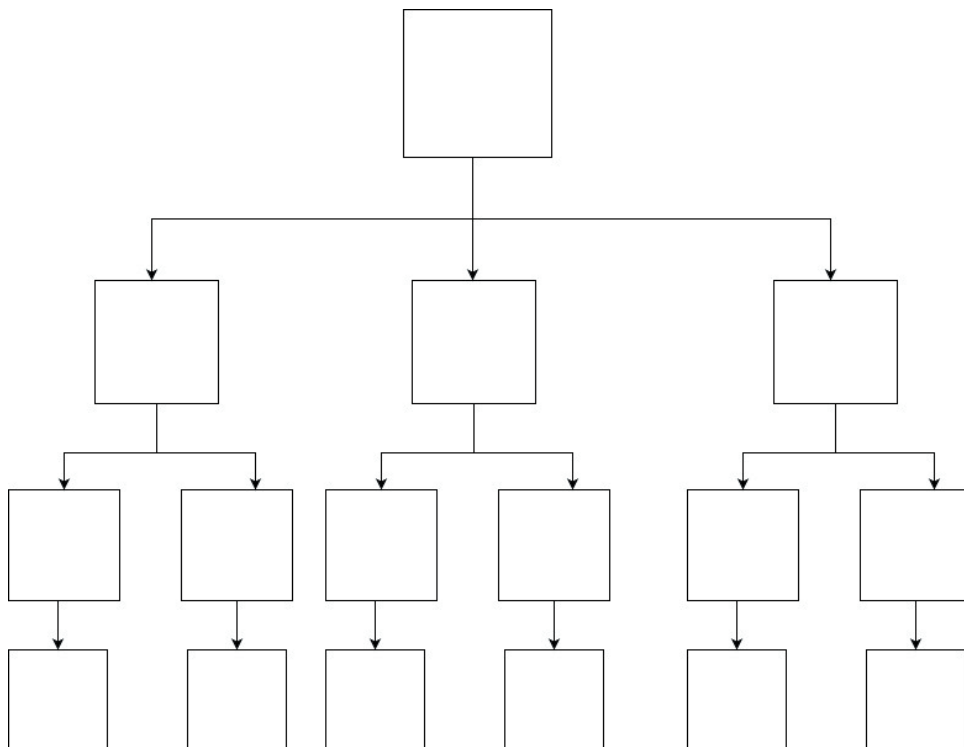
Then, choose a base colour (the largest field of the element).

Fill in the tree diagram with the classification by colours. Start from the largest field, proceeding towards the smallest.

Example: let's choose a base element circle (C) with blue (B) base colour. A possible sequence of the other colours: G, R, Y.

After filling in the tree diagram, write down the code of each element.

**Solution(s) of the task:**



Codes: \_\_\_\_\_

How many elements are there in the triangle set? \_\_\_\_\_

How many elements are there in the circle set? \_\_\_\_\_

How many elements are there in the square set? \_\_\_\_\_

**Remarks / Self-evaluation:**